



Crossroads to the West

A Virtual Tour of Winter Quarters, Kaneshville
and Other Mormon Settlements by the Missouri
1846 ~ 1853

**Website and Mobile Apps
User Guide**



Purpose

Our purpose with this project to is share the story of the migration of the early members of The Church of Jesus Christ of Latter-day Saints through Iowa to the Middle Missouri Valley. In this project we focus on Winter Quarters – Kanesville and surrounding areas. It is the story of the pioneers who settled in the hills and hollows along the Missouri River as they waited to trek west to the Great Salt Lake Basin. The tour is arranged as a virtual book with each chapter telling a segment of the story of the early pioneers and their sojourn at the Missouri River.



This work is the result of over 50 years of research by the noted historian Gail G. Holmes, sharing his knowledge of the people, places and events of this historic area with supporting; maps, photographs, audio recordings, artwork and videos.

Questions Answered with Crossroads

❖ **People**

Who were those who lived or traveled through this crossroads to the west?

❖ **Places**

Where did they live, work, worship? Where were they buried?

❖ **Events**

What was their experience? Did they stay or go west?



Where To Start?

<http://www.earlylds.com>

- ❖ 1. **People:** Search Early LDS Database – Genealogical Data
- ❖ 2. **Places & Events:** Crossroads to the West – Map & Event Data



Our Purpose:
To identify the people, places and early history of The Church of Jesus Christ of Latter-day Saints, helping to preserve their story of faith and fortitude.

Early Latter-day Saints
REMEMBERING THE PEOPLE AND PLACES

HOME | CROSSROADS TO THE WEST | MORMON PIONEER CEMETERIES | MORMON PLACES | NEWS

**ANNOUNCING ANOTHER VIRTUAL TOUR PROJECT...
CROSSROADS TO THE WEST!**

Crossroads to the West

Our purpose with this project is to share the story of the migration of the early members of The Church of Jesus Christ of Latter-day Saints through Iowa to the Middle Missouri Valley. In this project we focus on Winter Quarters - Kanesville and surrounding areas. It is the story of the pioneers who settled in the hills and hollows along the Missouri River as they waited to trek west to the Great Salt Lake Basin. The tour is arranged as a virtual book with each chapter telling a segment of the story of the early pioneers and their sojourn at the Missouri River. This project is the result of over 50 years of research by the noted historian Gail G. Holmes, sharing his knowledge of the people, places and events of this historic area with supporting; maps, photographs, audio recordings, artwork and videos.

Our official unveiling of the project will be at... RootsTech!
Come join us March 21st - 23rd at the Map-N-Tour Booth.

rootstech Salt Lake City
March 21-22, 2013

Search
First/Given Name:
Last/Surname:
Enter

- Browse Names
- Advanced Search
- History of the Database
- Corrections & Additions
- Tips on Searching
- Understanding Our Charts & Tables
- Resources for Pioneer Research

The Historical Pioneer Research Group, Inc is a not-for-profit organization in the state of Nebraska. All donations to the HPRG are tax-deductible. Donations can be sent to Historical Pioneer Research Group, Inc., 3215 State Street, Omaha, NE 68112
ATTN: Maury Schooff, Treasurer

ABOUT US | CONTACT US | STATISTICS | WHAT'S NEW | HELP & FAQ

Copyright © 2013 Historical Pioneer Research Group, Inc.

Click on screenshot to go to website.

Opening the Crossroads Project

Web Version <http://mapntour.com/view/crossroads>

Opening Screen: Information / Help "Bubble"

Navigation Guide

Placemark Descriptions

To Close Click Outside Of the Bubble

Crossroads to the West

Crossroads to the West Placemarks

- Guide
- Business
- Cemetery
- Historical Marker / Interpretive Marker
- Image Overlay - Maps
- Native American Site
- Path - Trails
- People
- Photographic Overlay - Drawings and Artwork

WINTER QUARTERS ON THE MORMON TRAIL

There are many places with a great deal of information in the "Crossroads to the West" project it may take a few seconds to completely load.

About 30,000 members of The Church of Jesus Christ of Latter-day Saints stopped in the Greater Omaha - Council Bluffs area from 1846 through 1853 enroute to religious freedom in the Great Salt Lake Valley. The religious refugees who came through this Missouri-Platte district, then called Council Bluffs, lacked food, fodder and supplies needed to go on to the Great Basin. With permission of the many Indian tribes of the area the Mormons stopped here in the hills

Please do not show this box again. ☐

MAPNTOUR.COM
POWERED BY

Google earth
[Terms of Use](#)

Imagery Date: 3/7/2012 41°10'06.29" N 95°56'37.21" W elev 1070 ft eye alt 25543 ft

Click on screenshot to go to website.

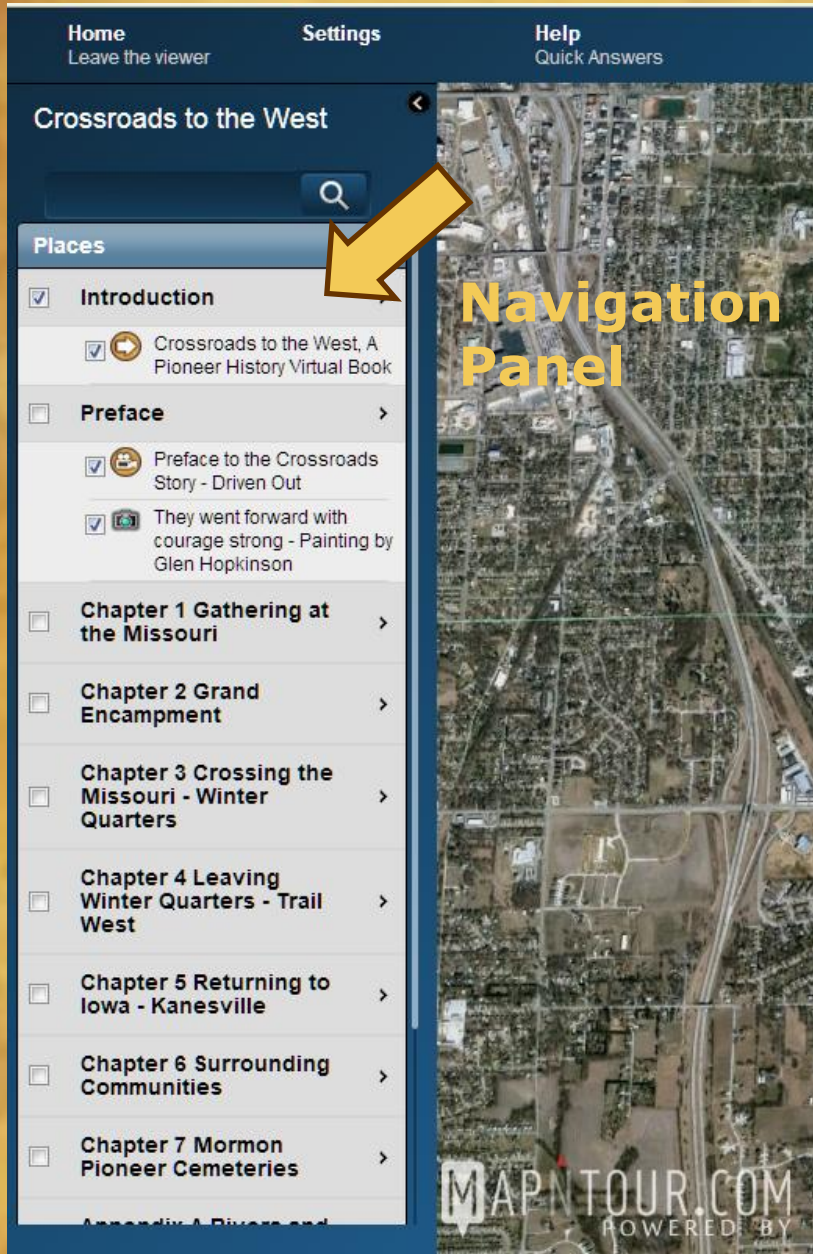
Navigation Panel

Placemarks in chapters 1 through 4 are intended to be viewed in consecutive order as they tell the sequential order of the history.

In chapters 5 and 7 the placemarks are presented in alphabetical order to easily find a given place.

Use search box to look for a specific place or person throughout the entire site.

The appendixes include information as to the location of rivers, and creeks as they were in pioneer times and today as well as historical maps which are overlaid on the earth's terrain to help you envision the world as the pioneers knew it



File Structure

There are many placemarks in this project each representing a place and telling of people and events that happened there. The project is organized into the familiar parts of a book with a preface, chapters and appendixes. Each of these are called sections. To view each section with its featured locations follow the guide below.

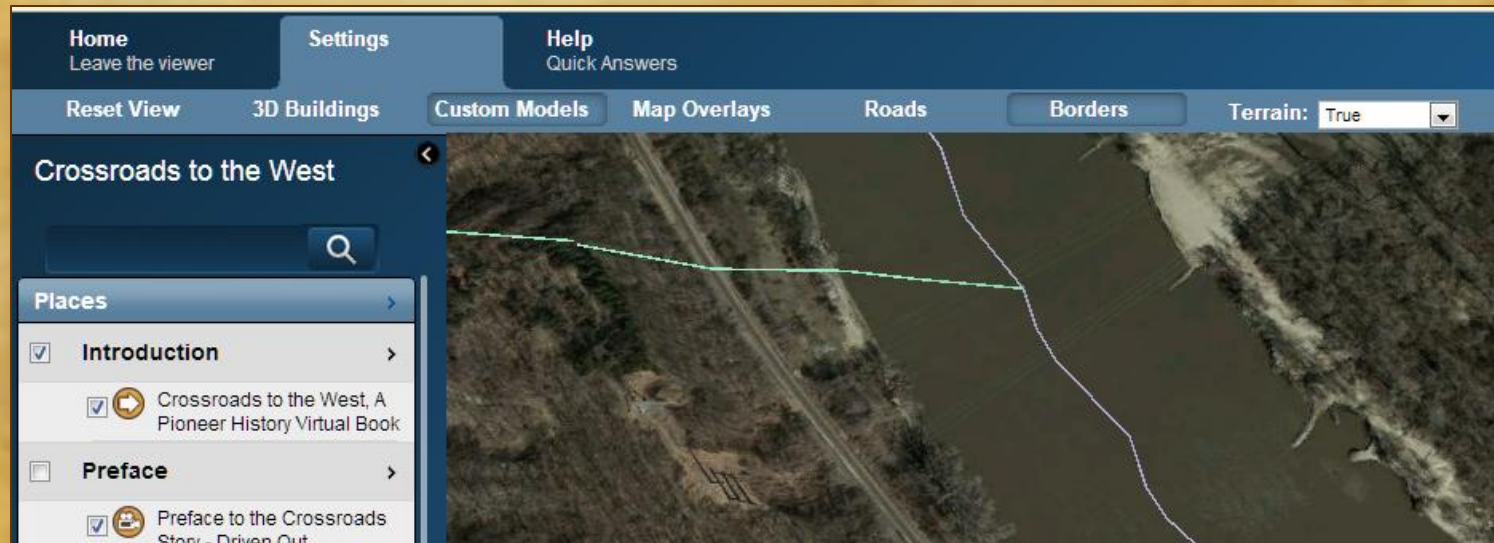


- 1. Blue Section Bar:** Click on this bar opens and closes the section.
- 2. Activation Check Box For Each Section:** Displays/hides that group of placemark icons on the map.
- 3. Activation Check Box for Each Placemark:** Displays/hides individual placemarks. Placemarks in most sections are opened and contents activated.
- 4. Placemark Icon:** Clicking on a placemark icon will open the information "bubble" about that place.

5. Placemark Title:

Click on the title and you will be "flown" to that location on the map. You can then drag the map or use the navigation control in the top right corner to explore that area in more detail.

Navigation Tips



Navigation Tips:

- **Clearing Map Placemarks:** As you conclude a visit to each section remember to close the section by unchecking the activation box to clear the map.
- **Enjoying the Historic Maps:** To access/hide globally, click "Settings" at the top navigation menu, "Map Overlay Toggle Button on/off or uncheck box to left of individual map title on left hand navigation bar.

On-Map Navigation:

Point cursor at placemark and it will "bounce" to identify itself. Click on it and the information "bubble" opens. To close click anywhere outside the "bubble."

History Chapters

- ☐ **Chapter 1 Gathering at the Missouri** >
- ☐ **Chapter 2 Grand Encampment** >
- ☐ **Chapter 3 Crossing the Missouri - Winter Quarters** >
- ☐ **Chapter 4 Leaving Winter Quarters - Trail West** >
- ☐ **Chapter 5 Returning to Iowa - Kaneshville** >

Chapter 1 Gathering at the Missouri tells of the pioneers arrival at the Missouri then the border of the United States. Covered in this chapter is, Ft. Croghan, Council Point, Emigrant Steamboat Landing.

Chapter 2 Grand Encampment explores the Grand Encampment, Taylor – Pratt Hill, the enlisting of the Mormon Battalion and the beginning of their march west.

Chapter 3 Crossing the Missouri – Winter Quarters shares the story of crossing the Missouri and the decision to stop and establish Winter Quarters. Included is Cold Spring Camp,

Council Hill, Cutler's Park, Winter Quarters, Summer Quarters, Heber C. Kimball Farm.

Chapter 4 Leaving Winter Quarters – Trail West shows the trail west from Winter Quarters to the Elk Horn River.

Chapter 5 Returning to Kaneshville guides you through the growth of Kaneshville to a bustling prairie town with its many mercantile establishments. Visit Hyde Park where the voice of the Lord was heard exclaiming Brigham Young to be the second president of the Church.

Surrounding Communities



Each community / settlement includes the research of Gail G. Holmes, as well as data from our sister sites the BYU Winter Quarters Project, and Mormon Places. The “bubbles’ are rich with graphics, maps, audio and visual files, and links to information found throughout the Internet. Links can also be found to the Early LDS Database displaying those known to live in these pioneer villages.



Council Point - 1846

COUNCIL POINT, IOWA ON THE MISSOURI RIVER, WAS PRIMARY SHIPPING, RECEIVING POINT

Close behind Grand Encampment, Kanessville, and Winter Quarters, Council Point, Iowa was the next largest of Mormon (LDS) refugee communities of 1846-1853 by the Missouri River. Its name was drawn from a Pottawattamie / Ottawa / Chippewa Indian council held there nine days before arrival June 14, 1846 of the first three LDS refugee wagon trains. The LDS had fled mob attacks in west central Illinois and southeastern Iowa.

There were two good reasons for the largely Pottawattamie council in that location. Their purpose was to test tribal members' willingness to sell southwestern Iowa and move to northeastern Kansas territory. First good reason for meeting there was the accommodation afforded by the partial remains of the 1843 flood-damaged Fort Croghan. Second good reason was the continued presence of the Davis Hardin family which had established in 1837 a short-term government farm there for the Indians.

The Pottawattamie, and scattering of Ottawa and Chippewa, members approved at that first of several councils the sale of southwestern Iowa to the American government. As other parts of the tribe also approved, at their scattered village sites, it was determined these Algonkian-speaking natives from the Great Lakes area would leave Iowa in 1847 for Kansas.

Council Point and the partial ruins of Fort Croghan were at the southwest edge of what today is Council Bluffs, Iowa. It is about a quarter mile west of today's Lake Manawa, itself an 1880s remnant of

Related Content

[Early LDS Website](#)
[Members of the Council Point Branch](#)



Council Point Looking Towards River from the Historical Marker



Council Point Historical Marker

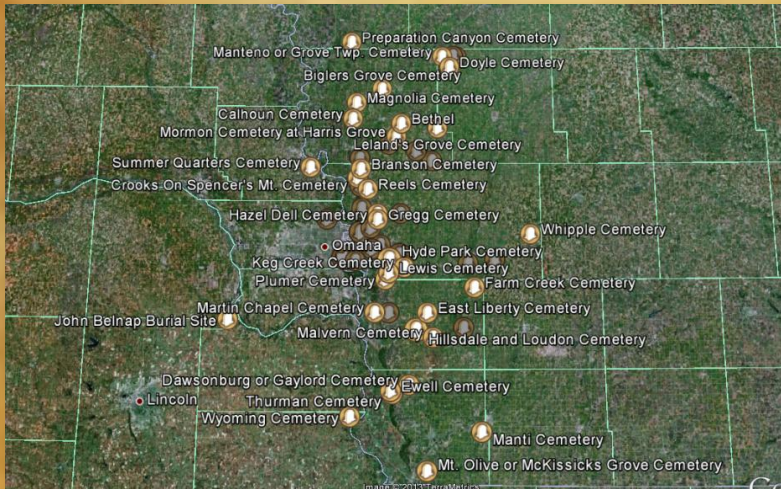


Rope Walk



Steamboat at

Pioneer Cemeteries



Many of these final resting places of the early LDS have been identified because of the years of dedicated research of Bob and Martha Sharp. Each cemetery includes the known history of the burial sites. The bubbles include links to Internet databases with cemetery listings including burials listed in the Early LDS Database.



Winter Quarters Pioneer Cemetery

PIONEER DEATHS AT WINTER QUARTERS, NEBRASKA, NOW THE CITY OF FLORENCE

Mormon Pioneer Cemetery, on top of a bluff west of Winter Quarters, was designated as such December 16, 1846 while the city was being planned.

The cemetery has 67 burials moved there from Cutler's Park. [Research is ongoing as to the possibility that burials remain at Cutler's Park. Ground penetrating radar is scheduled for June of 2013.] There are 307 additional Winter Quarters burial plots, including 15 with no names recorded. Complicating the count further, there were at least 10 infant burials in other, shared, plots.

After the Mormons left, the Bank of Florence, Nebraska assumed control of the cemetery and arranged more burials. Then the City of Florence took over management of the cemetery and encouraged community burials in the pioneer grave yard. They changed the name to Florence Cemetery.

When the City of Omaha annexed Florence in 1917, the cemetery was continued as a local burial grounds within the city. Finally, The Church of Jesus Christ of Latter-day Saints leased the cemetery for \$1. City officials gave title to the church decades later in thanks for work done by Mormon volunteers throughout the city after a tree-shattering snow storm October 25-26, 1997.

Facts about the cemetery:

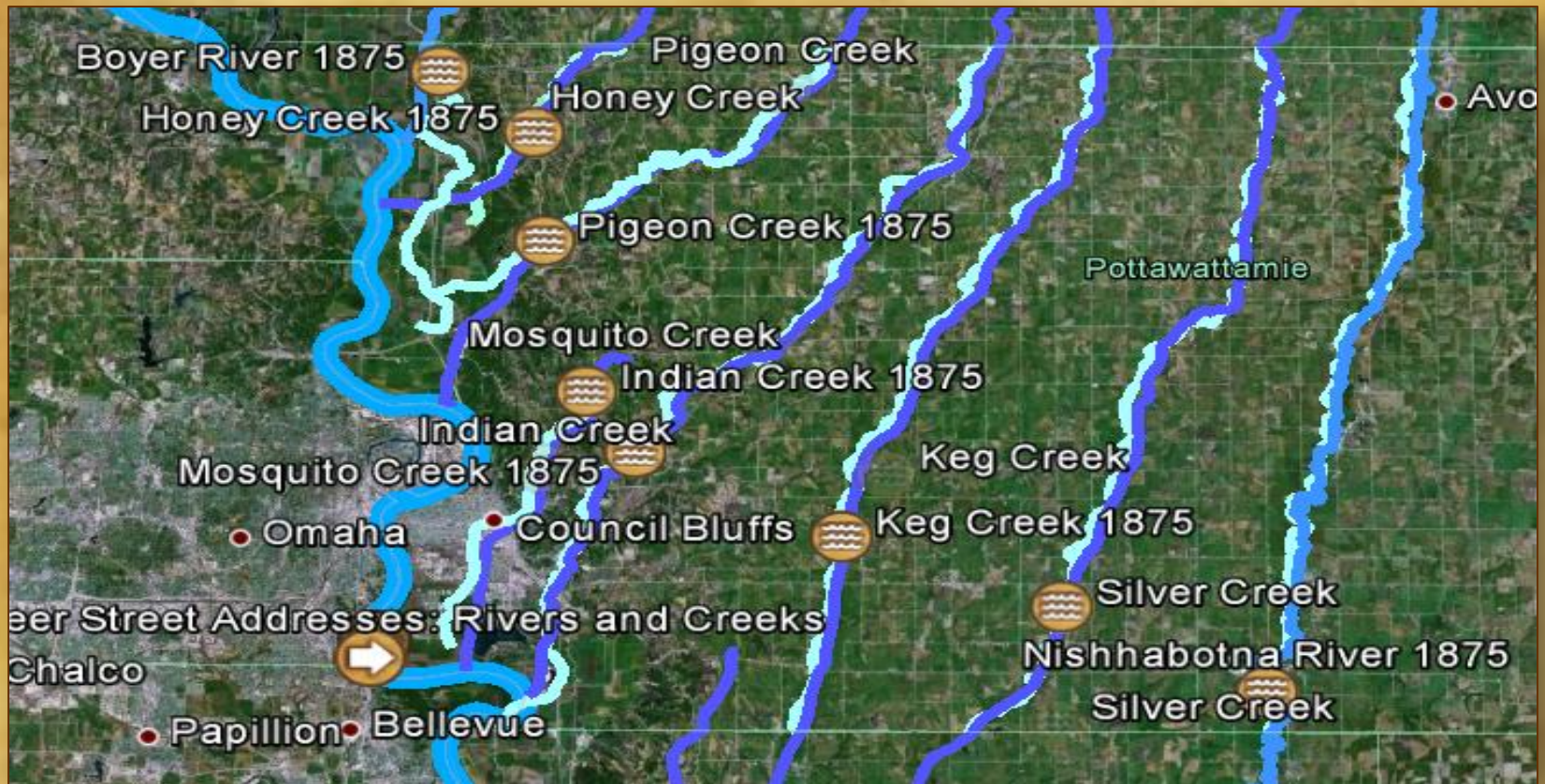
Related Content

[Burials at Winter Quarters Pioneer Cemetery](#)



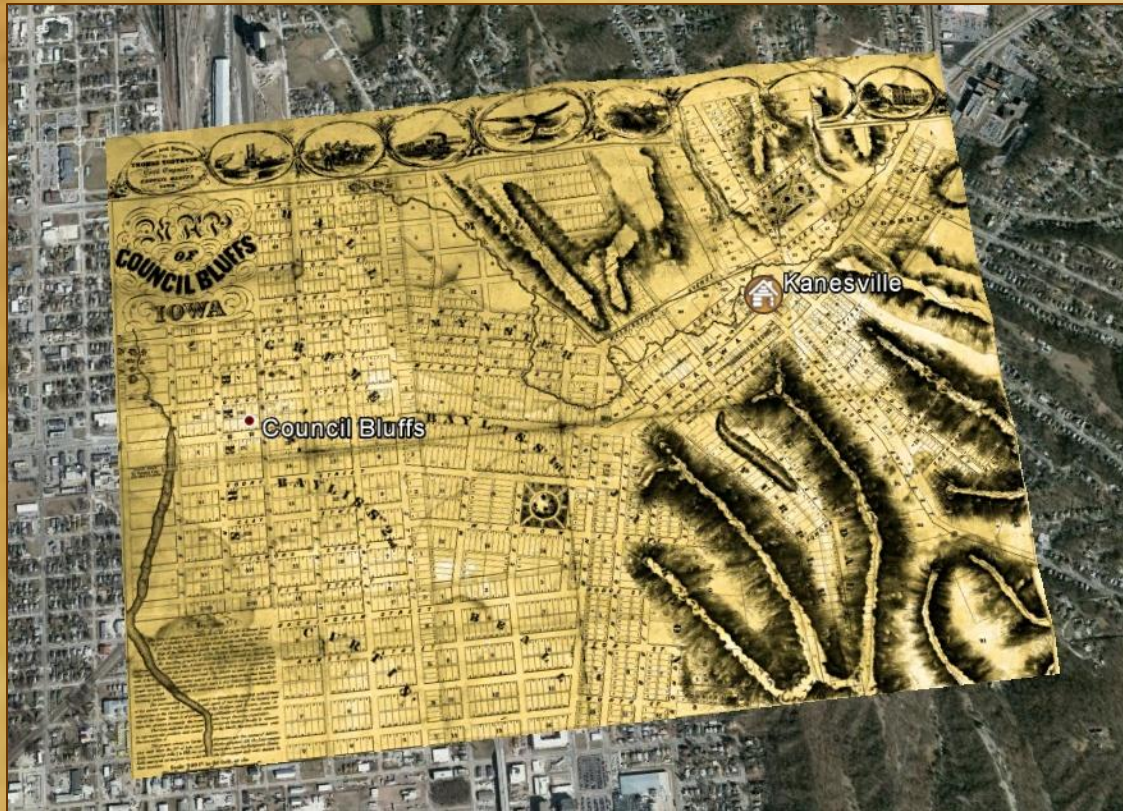
Amy Porter Grave
Only Original Stone
Still in the Cemetery

Waterways Yesterday & Today



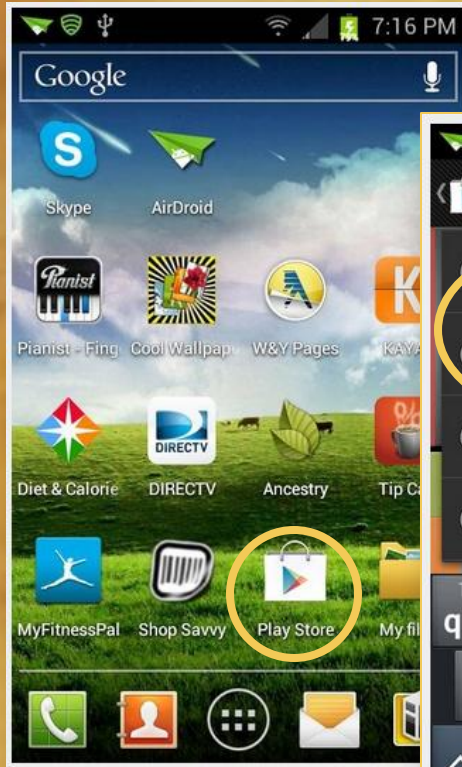
Waterways are shown as they are today, as well their location from early maps. The courses of local creeks and rivers have changed through the years. Knowing their locations may help to identify where settlements and cemeteries were originally located.

Historic Maps

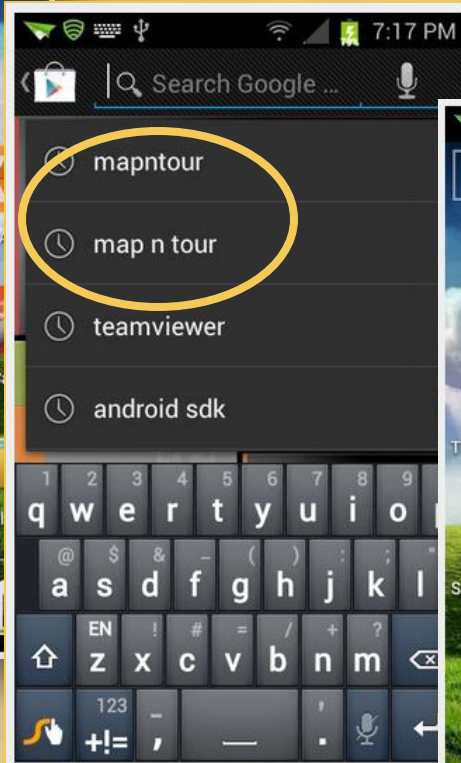


Maps from the mid 1800s are available as overlays toggle opening and closing the maps to compare with today's terrain.

Visit the device
App store



Search for
mapntour



Icon will be
Added to your
Desktop



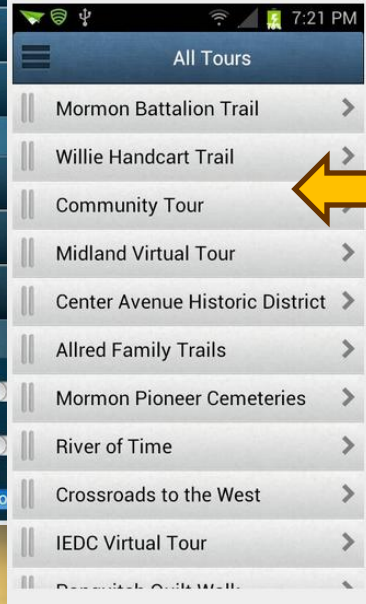
Create an
account
Or sign in using
Google+
Or Facebook



Opening the App



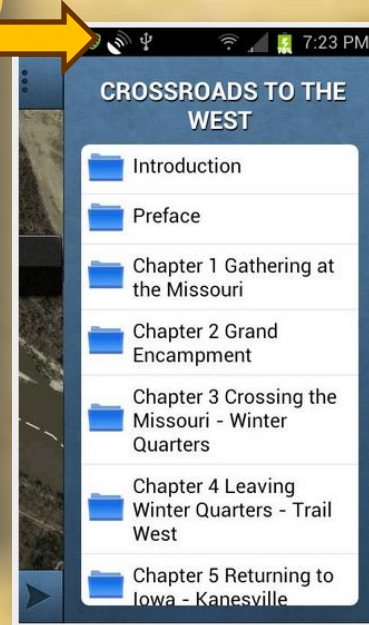
**Opening Screen
Choose All
Tours**



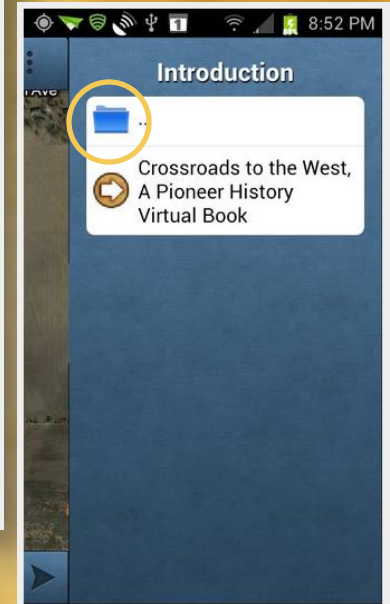
**List of Tours
Available at Map-
N-Tour Choose
Crossroads to the
West**



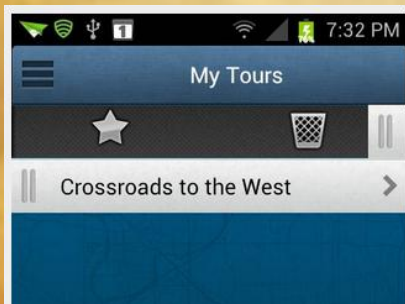
**Crossroads Will
Open with the
First Placemark.
Three Lines on
Left Opens Tour
List Drawer.
Three Dots on
Right Opens Main
Directory Drawer**



**Main Directory
Drawer. Click on
Folder of
Interest**

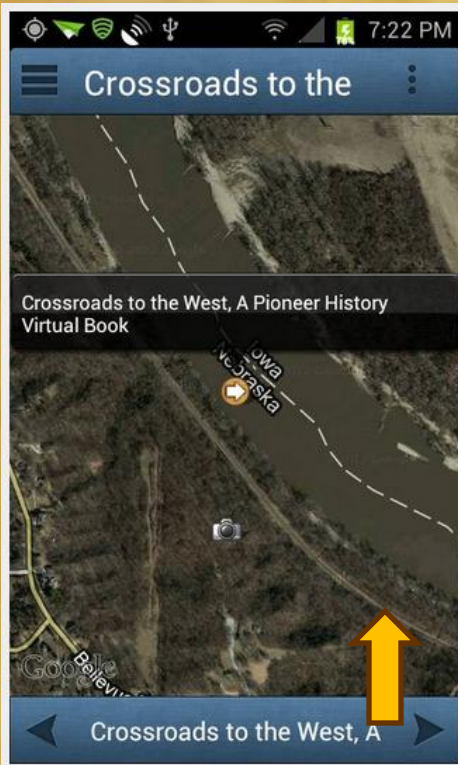


**Click on Top File
Folder to Return
to the Main
Directory**

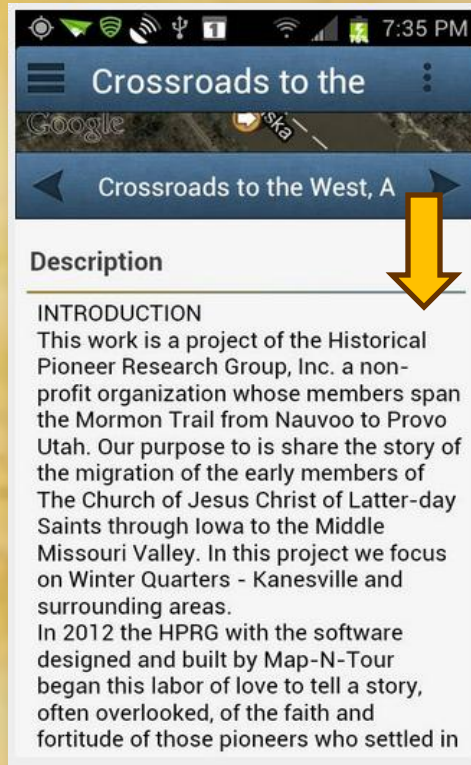


**Sliding the Tour Bar to the Right Allows You to Choose
Favorites or Delete a Tour From the My Tours List.**

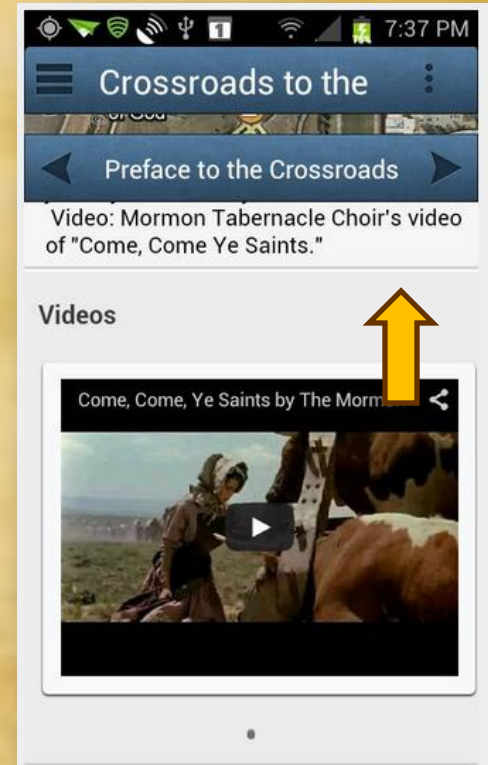
Opening a Placemark



Touch and Pull Up on Blue Bar to Show Information in the Bubble



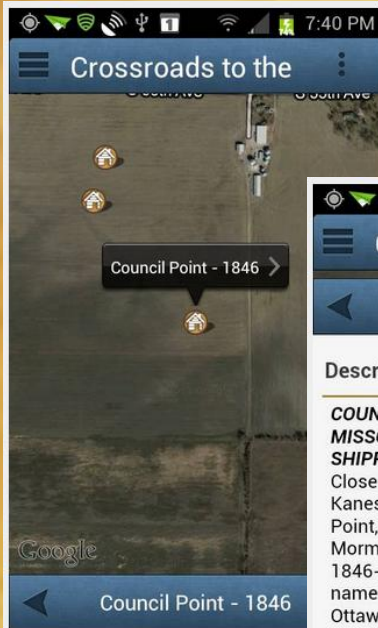
Touch and Pull Down on Blue Bar to Show Map



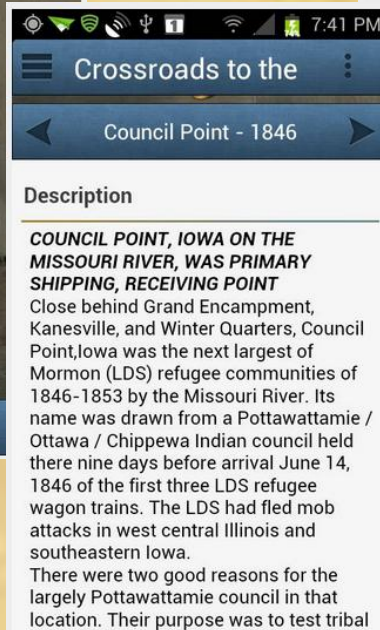
Touch and Pull Up in The Bubble to Access All Information. Audio, Video and other Files are Found at Bottom of the Window.

Exploring A Placemark

Council Point Placemark, Chapter 1 Gathering at the Missouri



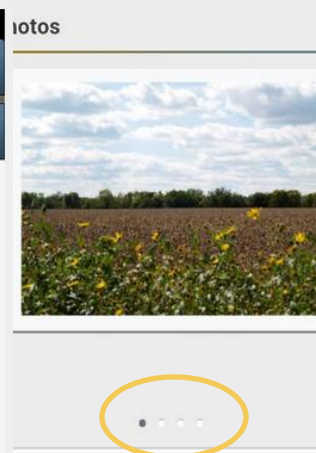
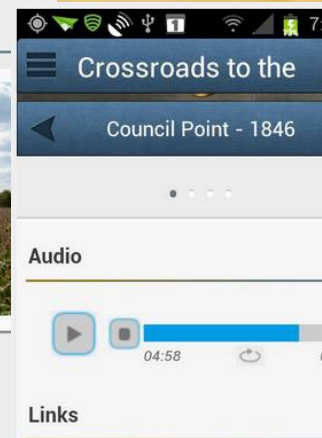
Pull up the information bubble



Explore Council Point in Chapter 1, Gathering at the Missouri



Listen to Gail Holmes describe Council Point



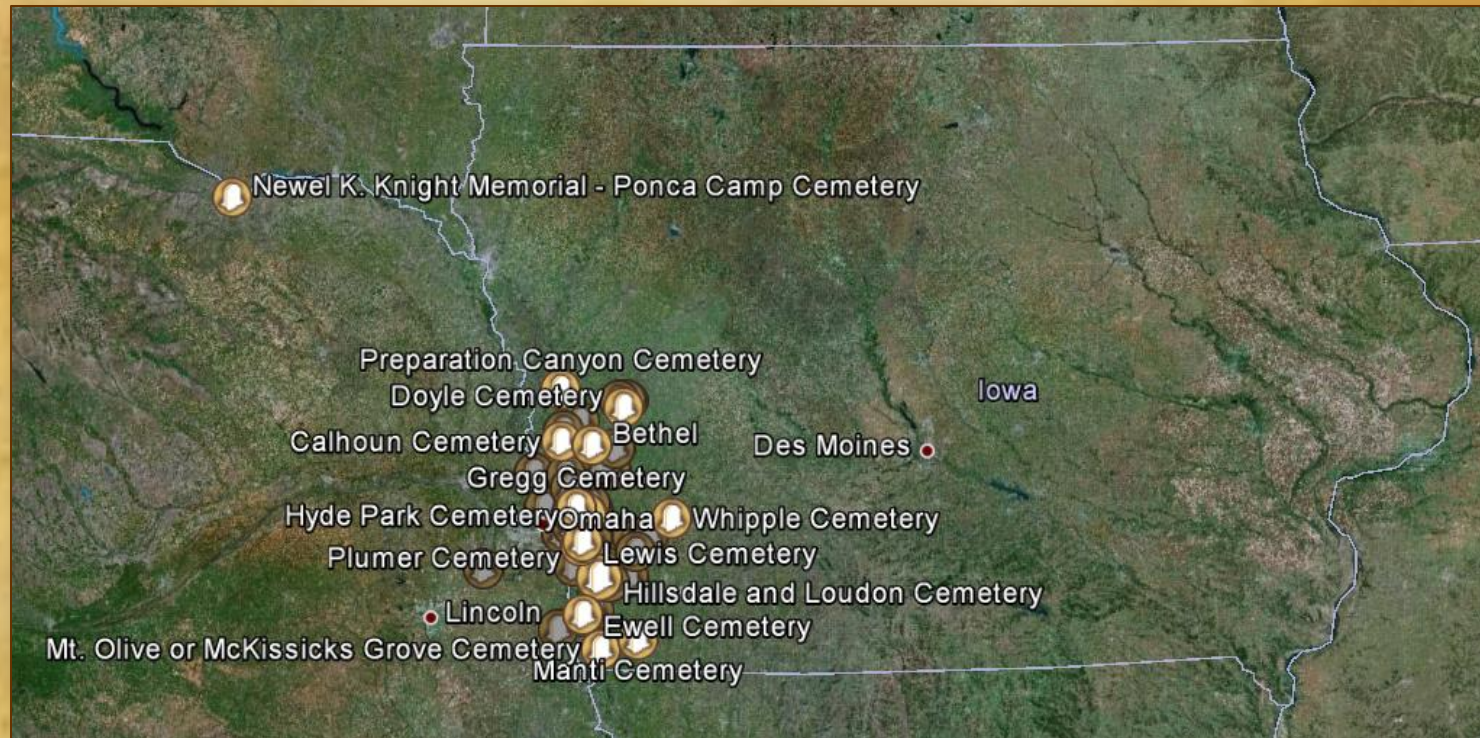
View graphic files



Click link to the Early LDS Website to show residents of Council Point

Future ...

iPad Version June 2013
Mormon Pioneer Cemeteries Across Iowa,
and the Nauvoo Project
Coming in 2014!



**For more information on these and other projects by the
Historical Pioneer Research Group
Contact Us at pioneer-research-group@cox.net**